



LABORATORY AND INDUSTRIAL PACKAGING

 deltalab



Polyethylene wide mouth jars with lid and insert plug

High density polyethylene jars with screw cap and insert plug.

Jars and plugs are natural translucent colour; lids are black. Supplied uncapped (except sterile models, supplied capped and bagged).

Upon request, jars can be supplied individually wrapped for a minimum order of 3 cases by model, and sterile for a minimum order of 6 cases by model.

Ask for minimum quantity and delivery time for caps and jars in other colours.

code	capacity ml	sterile, individual wrap	no sterile, individual wrap	Ø internal mouth mm	Ø body mm	unitary weight g	height with lid mm	alimentary use	case quantity	case weight	case volume	pallet quantity
202811	30	—	—	25	32	4.2	53		100	1.00	0.011	14,700
202810	60	—	—	38	52	8.2	48		200	3.90	0.046	8,000
202808	90	—	—	51	60	8	51	✓	150	3.15	0.045	4,800
202809	125	—	—	51	60	12	62	✓	200	6.00	0.082	4,000
202801	170	—	—	51	60	14	80		160	6.46	0.082	3,200
202802	250	—	—	54	67	20	100	✓	125	4.85	0.080	2,500
202802.1	250	yes	yes	54	67	20	100		125	4.94	0.084	2,500
202802B	250	—	yes	54	67	20	100		125	5.50	0.078	2,500
202814	400	—	—	60	74	27.3	124		130	8.00	0.140	1,560
202814.1	400	yes	yes	60	74	27.3	124		130	8.00	0.140	1,560
202803	500	No	No	67	80	35	131	✓	120	7.70	0.140	1,920



code	capacity ml	sterile, individual wrap	no sterile, individual wrap	Ø internal mouth mm	Ø body mm	unitary weight g	height with lid mm	alimentary use	case quantity	case weight	case volume	pallet quantity
202823.1	500	yes	yes	67	80	35	131		120	7.60	0.140	1,920
202821.1	500	—	yes	86	103	44.9	93		95	8.31	0.140	1,520
202821	500	—	—	86	103	44.9	93	✓	95	8.44	0.140	1,520
202821.0	500	yes	yes	86	103	44.9	93		95	9.20	0.140	1,520
202823	500	—	yes	67	80	35	131		120	8.60	0.130	1,920
202813	750	—	—	86	103	48	127	✓	75	4.56	0.152	900
202813.10	750	yes	yes	86	103	48	127		75	7.20	0.140	1,200
202818	1,000	—	—	86	103	56.7	157	✓	50	5.43	0.140	800
202828G	1,000	yes	yes	86	103	56.7	157		50	5.66	0.140	800
202828	1,000	—	yes	86	103	56.7	157		50	5.66	0.140	800
202804	1,250	—	—	86	103	56.7	173	✓	50	6.10	0.140	800
202815	1,550	—	—	86	113	64.6	181		45	6.00	0.140	720
202815B.0	1,550	yes	yes	86	113	64.6	181		45	6.00	0.140	720
202820	2,000	—	—	86	103	83.1	283	✓	35	5.12	0.140	560
202820.0	2,000	yes	yes	86	103	83.1	283		35	6.10	0.140	560
202839*	2,000	—	—	105	128	73	205		32	5.14	0.140	512

* This model is supplied with lid.



Polyethylene beakers

Volumes available range from 60 ml to 1,000 ml.

All models come without lid, except the 1,000 ml beaker, which is available with or without lid.

For use with liquid and solid samples. Manufactured in a flexible material for easy pouring.

code	volume ml	body Ø mm	mouth Ø mm	height mm	weight body g	case quantity	case weight	case volume
242801	60	40	50	48	5.0	1,100	5.95	0.034
242802	100	40	55	58	7.0	1,000	7.20	0.034
242803	230	55	70	78	15.5	700	10.82	0.042
242804	275	53	72	98	22.0	500	11.66	0.042
242805	500	70	90	108	35.2	200	8.50	0.045
242806	1,000	90	120	132	65.0	120	8.22	0.042
242811*	1,000	90	120	132	65.0	65	5.93	0.042

* With lid, Beaker and lid are supplied in the same bag,



Disposable cups

Disposable sample cups, for general sample collection.

Cups are supplied stacked.



code	volume ml	material	mouth Ø x height	case quantity	case weight	case volume
202248	100	polypropylene	57.5 x 62	40 x 100	5.53	0.070
202317	150	polystyrene	70 x 70	30 x 100	8.32	0.080

Tamper evident buckets, large capacity

Disposable containers made of **autoclavable polypropylene**. Include tight fitting and leakproof lids. All models include a sturdy and convenient white plastic handle for easier carrying. Buckets are supplied with lid apart. **Made with materials suitable for alimentary use.**

code	capacity l	Ø ext. lid mm	Ø int. mouth mm	height whitout lid mm	*body weight g	case quantity	case weight	case volume
222802	3	200	184.00	138.00	105.00	80	9.00	0.140
222803	4.5	225	210.00	156.00	134.00	48	10.46	0.140
222804	5.6	225	211.00	194.00	152.00	45	10.79	0.140
222805	10.6	268	251.00	263.00	314.00	20	8.39	0.140

* Weight with no lid.



Jars with lid

Body and lid in white **autoclavable polypropylene**.

Self sealing security lid.

Code **241014** and **241015** embodies a plastic handle.

Jars are supplied uncapped.

Cases per pallet: 24, excepting code **241010**, palletized in 40 cases.

Made with materials suitable for alimentary use.



code	nominal cap. ml	Ø int. mouth x Ø base x h without lid mm	*weight g	case quantity	case weight	case volume
241010	250	84 x 79 x 61	13	150	3.04	0.042
241011	550	107 x 98 x 79	24	250	5.01	0.103
241013	1,000	107 x 94 x 144	36	150	7.31	0.082
241014	1,560	135 x 118 x 138	48	150	10.12	0.130
241015	2,000	163 x 144 x 156	72	48	5.37	0.075

* Weight with no lid.



Buckets with spout

Natural **low density polyethylene** buckets with a stainless metal handle. Include a spout for easier pouring.

Made with materials suitable for alimentary use. Moulded-in graduations. Very sturdy construction.

These buckets may be printed with your name and logo.

code	capacity l	dimensions mm	quantity	weight	volume
19905	9	270 x 200 x 250	1	0.58	0.014
19906	12	300 x 220 x 280	1	0.70	0.018
19907	15	340 x 250 x 310	1	0.85	0.026



Industrial jugs

Made of thick **rigid polypropylene**. Natural colour.

Recommended for industrial use.

Made with materials suitable for alimentary use.



code	capacity l	mouth Ø mm	height mm	weight ut. g	case quantity	case weight	case volume
470007	5	190	240	400	5	1.86	0.030



Round jugs with handle

Polypropylene. **Autoclavable to 121 °C.** Moulded-in graduations

Made with materials suitable for alimentary use.



code	capacity l	graduation ml	Ø mm	height mm	case quantity	case weight	case volume
470000	0.5	25	80	120	60	4.40	0.066
470001	1	50	125	140	48	4.60	0.086
470002	2	50	155	180	36	6.40	0.110
470003	3	100	165	180	27	7.10	0.130
470005	5	250	185	230	12	5.00	0.106

Minimum order quantity: 1.

Self sealing security jars

Excellently finished, body in **autoclavable polypropylene**. Screw cap in high density polyethylene with strips. Security sealing with tag for easy opening. Tamper evident system. External moulded ring. Smooth internal side. Each jar specifies on its bottom its capacity, and the material it is made of. Supplied uncapped. **Made with materials suitable for alimentary use.**

code	volume ml	max. body Ø mm	base Ø mm	height Ø mm	lid external Ø mm	weight ut. without lid g	case quantity	case weight	case volume
202911N	100	55.8	50.0	59.1	56.0	15.0	150	3.40	0.042
202912N	250	71.8	65.0	83.4	72.0	23.3	115	4.80	0.082
202913N	350	94	87.7	68.0	96.0	27.0	80	3.64	0.082
202914N	500	94	87.7	105.3	96.0	36.0	100	6.15	0.140
202915N	1,000	111.6	110.8	123.8	111.8	62.0	60	7.13	0.140
202916N	1,250	111.6	110.8	153.0	111.8	73.0	45	5.32	0.140



Square containers with star-shaped caps

Colour: translucent white. Containers and insert plugs made of **polyethylene**. Star-shaped screw caps made of polypropylene. Tagging points on neck and cap for a tamper proof closure or for labeling. All models have moulded-in graduations. Containers are supplied plugged and capped. Not recommended for liquids transport.

Made with materials suitable for alimentary use.

code	capacity ml	graduation each ml	dimensions mm	neck Ø mm	body weight g	case quantity	case weight	case volume	pallet quantity
444608	25	12.5	32 x 34 x 52	18	6	500	6.60	0.090	12,000
444609	50	10	38 x 38 x 70	23	15	400	7.50	0.074	9,600
444610	100	20	42 x 48 x 90	33	22	600	18.20	0.195	9,600
444611	250	50	57 x 60 x 110	33	32	300	13.80	0.195	4,800
444612	500	100	70 x 80 x 138	44	55	150	10.50	0.192	2,400
444613	1,000	100	80 x 103 x 176	58	97	80	11.16	0.173	1,280
444614	2,000	100	100 x 134 x 210	58	177	40	9.16	0.170	640





Bottles with standard, narrow neck

Bottles made of **autoclavable**, natural colour **polypropylene**. Hermetical closure. Easy opening and closing caps thanks to its size. Gripped, in order to ease its usage with gloves. Cap and body with holes for sealing or labeling.

Neck and cap with vents.

Graduation: 100 ml model, every 20 ml; 250 ml, every 25 ml; 500 ml and 1,000 ml, every 100 ml.



code	volume ml	neck DIN	mouth Ø mm	body Ø mm	height mm	body weight g	case quantity	case weight	case volume
191597	100	GL18	13	48	106	18.5	100	1.82	0.032
191601	500	GL25	19	75	180	49.3	150	9.00	0.180
191603	1,000	GL32	23	95	222	100.9	80	8.80	0.180



Bottles with standard, wide neck

Wide neck bottles made of **autoclavable polypropylene**, or **polyethylene** (not autoclavable).

Body and caps in natural colour. Hermetical closure.

Easy opening and closing caps thanks to its size. Gripped, in order to ease its usage with gloves.

Neck and cap with vents. Graduation: 100 ml model, every 20 ml; 250 ml, every 25 ml; 500 ml, 1,000 ml, and 2,000 ml, every 100 ml.



Made of polyethylene, not autoclavable:

code	volume ml	neck DIN	mouth Ø mm	body Ø mm	height mm	body weight g	case quantity	case weight	case volume
191610	100	GL32	24	48	103	25.7	100	2.78	0.036
191612	250	GL45	38	60	140	39.2	5 x 50	2.06	0.180
191614	500	GL45	38	75	168	55.9	5 x 25	9.30	0.180
191616	1,000	GL63	55	95	206	109.3	68	9.30	0.180
191618	2,000	GL63	55	120	249	145.2	30	6.30	0.180



Made of polypropylene, autoclavable:

code	volume ml	neck DIN	mouth Ø mm	body Ø mm	height mm	body weight g	case quantity	case weight	case volume
191623	100	GL32	24	48	103	26.6	100	2.98	0.038
191625	250	GL45	38	60	140	40.8	250	12.40	0.180
191627	500	GL45	38	75	168	56.5	125	8.50	0.180
191629	1,000	GL63	55	95	206	100.2	68	8.84	0.180
191631	2,000	GL63	55	120	249	175.5	30	6.30	0.180



Wide neck containers with star-shaped cap

Made of **high density polyethylene**. Natural colour.

Cylindrical container featuring a star-shaped screw cap.

Tagging points on neck and cap for a tamper proof closure, or for labeling. Containers are supplied non capped.

Made with materials suitable for alimentary use.

code	volume ml	internal mouth Ø mm	body Ø mm	height without lid mm	body weight g	case quantity	case weight	case volume	pallet quantity
44430000	125	29.5	52	103.5	18	100	3.00	0.045	4,000
44440000	250	37	65	128	24	120	5.20	0.080	2,880
44450000	500	47.4	82	152	40	60	4.32	0.080	1,440
44460000	1.000	59.4	102	183.2	90	55	7.49	0.140	880
44470000	2.000	59.4	123.5	244.5	128	30	5.75	0.140	480



Wide neck graduated containers with star-shaped cap

Colour: translucent white.

Bottles and insert plugs made of **high density polyethylene**.

Star-shaped screw caps made of polypropylene.

Tagging points on neck and cap for a tamper proof closure.

Sloping shoulders for easy pouring.

Bottles are supplied plugged and capped.



code	volume ml	graduation ml	internal mouth Ø mm	body Ø mm	height mm	body weight g	case quantity	case weight	case volume	pallet quantity
19408	50	10	24	40	75	13.20	100	1.65	0.019	9,600
19409	100	20	24	50	90	18.30	100	2.37	0.027	8,400
19410	250	25	34	60	125	35.80	50	2.16	0.037	3,600
19411	500	50	34	75	160	50.70	20	1.20	0.024	1,120
19412	1,000	100	45	95	200	92.20	20	1.95	0.046	960



Graduated narrow neck bottles

Made of translucent **polyethylene**.

Designed for the storage of acids and bases. Include a ribbed screw cap for a better handling, and an insert plug.

Feature sloping shoulders for easy pouring.

Tagging points on neck and cap for a tamper proof closure and for labeling.

Bottles have the following moulded-in graduations: code **19317**, every 10 ml; **19319**, every 20 ml; **19323**, every 25 ml, **19324**, every 50 ml, **19325** and **19326**, every 100 ml.

Supplied capped.



code	volume ml	neck Ø mm	bottom Ø mm	height mm	case quantity	case weight	case volume
19319	125	18.5	46	107	6 x 100	15.48	0.151
19323	250	23	60	131	6 x 50	12.78	0.151
19324	500	23	74	157	6 x 25	9.00	0.195
19325	1,000	33	94	205	4 x 20	9.00	0.187
19326	2,000	33	112	266	2 x 20	8.40	0.151



Graduated narrow neck opaque bottles

Opaque cylindrical bottles made of **dark grey polyethylene**, designed for the storage of light sensitive liquids or solid substances. Include a black screw cap and an insert plug for a positive leakproof seal.

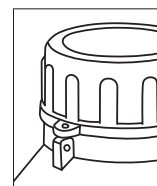
Ribbed caps for a better handling.

Heavy duty bottles, with sloping shoulders for easy pouring.

Tagging points on neck and cap for a tamper proof closure.

Body and cap with holes for sealing or labeling.

Supplied capped.



code	volume ml	neck Ø mm	bottom Ø mm	height uncapped mm	case quantity	case weight	case volume
193241	500	23	75	157	6 x 25	9.00	0.195
193251	1,000	33	95	208	4 x 20	9.70	0.192

Minimum order quantity: 1 bag.



Narrow neck, high resistance bottles

Bottles made of translucent, white, **high density polyethylene**, designed for the storage of acids and bases.

Blue screw cap on a combination of high and low density polyethylene. Screw caps are ribbed for a better handling.

Sloping shoulders for easy pouring. Heavy duty bottles.

Supplied uncapped.



See page 251



code	volume ml	neck Ø mm	bottom Ø mm	height mm	case quantity	case weight	case volume
44260000	250	30	67	157	90	4.90	0.076
44270000	500	30	79	176	70	4.86	0.076
44280000	1,000	30	96	211	50	6.70	0.110

Tamper evident, polyethylene bottles

Translucent cylindrical bottles made of **high density polyethylene with PP screw cap** and LDPE insert plug, designed for the storage of alcohol. Caps are ribbed for a better handling while working with gloves. Insert plugs are dispensed pierced. Tamper evident cap. No graduation. Supplied uncapped.

code	capac. ml	int. neck Ø mm	bottom Ø mm	height mm	body weight g	case quantity	case weight	case volume	pallet quantity
292300	75	19	39.4	97.6	8	220	2.92	0.042	6,160
292303	125	19	45	106	10	140	2.44	0.043	5,600
292304	250	19	58	128	18	80	2.10	0.044	3,200
292305	500	19	73	160	31	100	4.30	0.107	1,200
292306	1,000	19	82	230	46	60	5.00	0.110	720



Tamper evident bottles, tall models

Translucent cylindrical bottles made of natural colour **low density polyethylene**, with blue tamper evident closures. Caps are ribbed for a better handling while working with gloves. Bottles specially designed with tamper evident rings to ensure a positive seal. Bottles are supplied uncapped. To fully seal them, screw cap in a normal way and then screw again to fully position the tamper evident ring. To open, unscrew cap. The ring, automatically broken, will remain on the neck of the bottle.

code	capac. ml	body Ø mm	neck Ø mm	height mm	body weight g	case quantity	case weight	case volume	pallet quantity
282303	125	48	37	105	16.2	125	2.96	0.045	5,000
282304	250	59	37	129	21.9	75	2.48	0.045	3,000
282305	500	66	37	200	35.0	100	4.98	0.100	1,600
282306	1,000	87	37	230	52.0	60	4.22	0.140	960



Screw cap containers with seal and dropper

Made of **white polypropylene**. White watertight screw closing system with dropper-plug and blue security seal. Hermetical closure. Mouth diameter: 10.2 mm. Supplied uncapped.

code	volume ml	Ø base mm	height mm	body weight g	case quantity	case weight	case volume	pallet quantity
53020	20	24.6	65	3.50	2,000	12.70	0.122	32,000
53125	125	42.2	134.7	15.50	275	5.88	0.114	4,400
53250	250	50.8	167.3	21.50	200	5.95	0.100	3,200



Rectangular bottles

Body and cap made of **polyethylene**.

Bottles with blue screw caps, including seal ring and internal joint.

Tamper evident system.

Body in natural colour, graduated (moulded):

250 ml model, graduated each 50 ml.

500 and 1,000 ml models, graduated each 100 ml.

Supplied uncapped.



code	volume ml	internal mouth Ø mm	dimensions (A x B x C) mm	weight g	case quantity	case weight	case volume	pallet quantity
292819G	250	30.3	58 x 58 x 115	21	175	5.90	0.096	3,360
292820G	500	30.3	77 x 77 x 130	35	153	9.70	0.140	2,448
292821G	1,000	30.3	96 x 75 x 184	62	82	6.41	0.140	1,360



Nozzle bottles

Cylindrical bottles with screw caps, made of **high density polyethylene**, with a narrow nozzle design. Natural colour.

Cut the nozzle tip with scissors before liquid dispensing.

No graduation.

Bottles and caps are supplied in separated bags.

code	volume ml	neck Ø mm	bottom Ø mm	height mm	case quantity	case weight	case volume
272301	50	20	35	75	160	2.10	0.027
272303	125	20	48	100	135	2.52	0.045
272304	250	20	59	143	75	2.24	0.047

Squared bottles

Bottles with screw cap and insert plug, made of **polyethylene**.

Bottles and insert plugs are white (translucent), caps are red.

Ribbed caps for a better handling when using gloves.

Supplied capped.

code	volume ml	mouth Ø mm	dimensions mm	weight g	case quantity	case weight	case volume	pallet quantity
292819	250	37	58 x 58 x 103	21	210	6.00	0.096	3,360
292820	500	50.5	77 x 77 x 116	35	165	8.18	0.140	2,640
292821	1,000	50.5	96 x 75 x 172	62	96	7.55	0.140	1,536



Polyethylene bottles

Rectangular body and cap made of **polyethylene**.

The smaller sides are gripped for a better handling.

The bigger sides are flat for labelling.

Self-sealing blue cap with internal security ring.

Hermetical closure. Tamper evident system.

Supplied uncapped.



See sterile models on chapter **Microbiology**



code	volume ml	dimensions mm	int. mouth Ø mm	body weight g	case quantity	case weight	case volume	pallet quantity
282310	500	83 x 65 x 135	28	40	123	5.53	0.11	2,460
282311	1,000	83 x 65 x 235	28	61	73	4.93	0.11	1,460





Drum with screen and childproof cap

Made of white colour **high density polyethylene**.

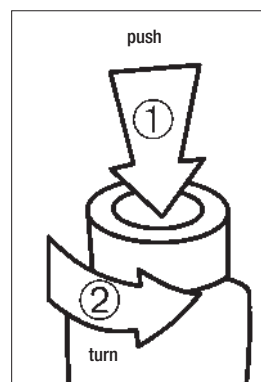
They embody a handle and a graduated screen which allows the user to see the content.

Childproof, tamper evident, ribbed screw cap with insert plug (see how to use a childproof cap in page 133).

Drums are supplied non screwed.

Dimensions: 133,8 x 192,5 x 391 mm

Made with materials suitable for alimentary use.



code	capacity l	total cap. ml	Ø int. mouth mm	body weight g	case quantity	case weight	case volume	pallet quantity
202505	5	5,260	34.5	170	16	3.25	0.14	256



Cylinder with handle

Made of **polypropylene**. **Autoclavable at 121 °C**.

The handle provides a secure, solid grip for superior control, specially when handling large volumes.

Pouring is safer and more convenient, as the cylinder is specially designed to ensure a total liquid delivering. 89 x 29 mm hand opening for easy handling.

Hexagonal base to prevent tipping and rolling.

Accurate and easy to read graduated double scale on the cylinder.



code	volume l	graduation ml	height mm	bottom Ø mm	Ø cylinder int. mm	Ø cylinder ext. mm	quantity	weight	volume
191578	1	10	440	146	59	64	1	0.62	0.020
191579	2	20	490	161	81	87	1	0.56	0.020

Stackable drums with tamper evident caps

Made of natural colour **high density polyethylene**. They embody a **handle** and a **tamper evident**, ribbed screw red **cap**, made of HDPE, with internal joint and internal security ring.

Hermetical closure when the cap is totally screwed.

ONU ADR compliant. Drums and caps are supplied non screwed.

code	capacity l	total capacity ml	minimum wall thickness mm	dimensions mm	quantity	weight	volume	pallet quantity
206020	20	20,900	1.20	242 x 298 x 365	1	1.00	0.023	48
206025	25	25,550	1.20	242 x 298 x 443	1	1.14	0.028	48



Wide mouth drums with security cap

Body made of natural colour and translucent **polyethylene**.

Cap made of blue polyethylene. Cap with seal and internal joint.

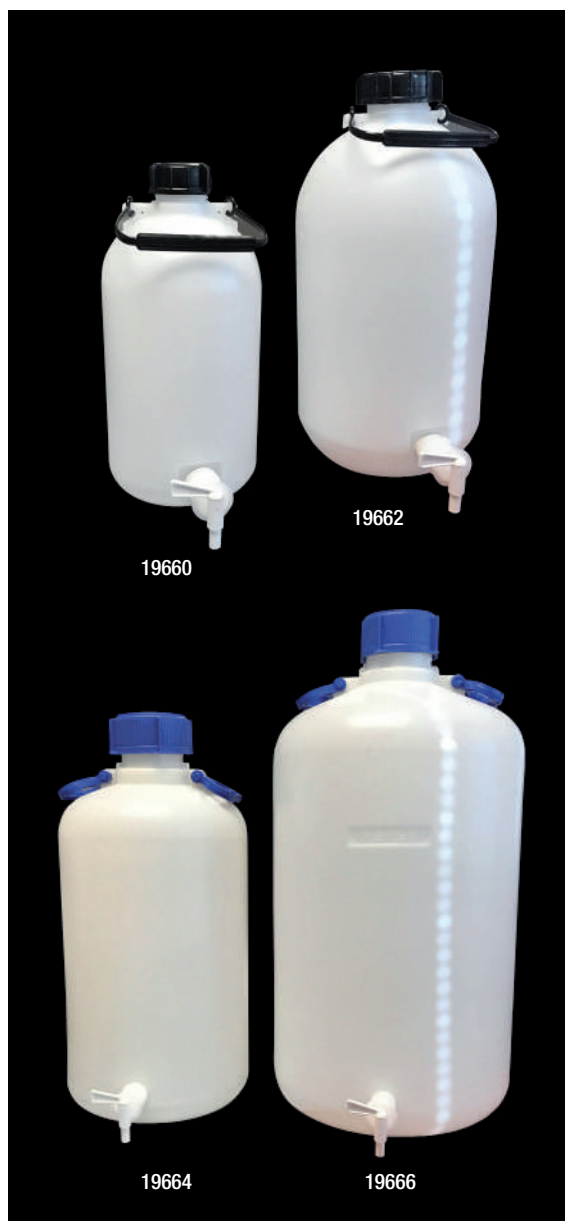
It incorporates a black plastic handle.

Suitable for solids and semi-solids.



code	capacity l	Ø external body mm	Ø internal mouth mm	height mm	quantity	weight	volume	pallet quantity
202705	5	168	97	288	11	3.65	0.133	176
202710	10	210	97	353	6	3.24	0.134	96





Drums with tap

Made of **high density polyethylene**. (Code **19375** is made of polypropylene). Heavy duty drums, wall thickness 2 mm. With two handles for easy transport. Can be used at temperatures below 0 °C.

The tap includes a seal ring to ensure a leakproof seal. Drums are supplied complete with tap (also available spare tap).

Each drum includes a screw cap and a plug for added security. **Be sure to tighten the drums' thread firmly.**

The codes **19660** and **19662** are made with materials suitable for alimentary use.



code	capacity l	Ø neck mm	Ø base mm	height mm	quantity	alimentary use	weight	volume
19660	5	52.5	165	345	1	✓	0.85	0.019
19662	10	52.5	210	425	1	✓	0.50	0.016
19664*	25	79.5	280	565	4		5.76	0.17
19666*	50	79.5	350	700	2		4.80	0.17

Spare tap:

19375	–	–	–	–	1		0.005	0.0001
--------------	---	---	---	---	---	--	-------	--------

*Minimum order quantity: 1.

Wide and narrow neck drums

Heavy duty drums made of **high density polyethylene**.

Include an insert plug for a positive leakproof seal, and one handle for easy carrying. Tagging points on neck and cap for a tamper proof closure or for labelling.

Wide mouth drums are designed both for solids and powders, easy to fill and pour.

Made with materials suitable for alimentary use.



Wide neck bottles (1)

code	capacity l	Ø neck mm	Ø body mm	height mm	quantity	weight	volume	pallet quantity
191640	5	90	165	305	1	0.43	0.009	200
191642	10	120	210	395	1	0.90	0.014	90



Narrow neck bottles (2)

code	capacity l	Ø neck mm	Ø body mm	height mm	quantity	weight	volume	pallet quantity
191646	10	53	210	420	1	0.85	0.015	90



Stackable drum with tamper evident screw cap

Made of **high density polyethylene**.

It is provided with a sealing screw cap with grip.

This drum has four flat sides suitable for sticking information labels.

They are distinguished by two main characteristics: they can be easily stacked joining the tops and the bottoms together, and they can be palletised thanks to their reduced overall dimensions.

All of them are **ONU ADR** compliant, meeting all the standards for the transport of hazardous, toxic and noxious products.

Made with materials suitable for alimentary use.

code	nominal capacity l	total capacity l	dimensions mm	Ø mouth mm	DIN	quantity	weight	volume	pallet quantity
202605	5	5.5	198 x 148 x 240	44	51	1	0.27	0.007	200
202610	10	11.6	224 x 193 x 305	44	51	1	0.47	0.017	100
202620	20	21.7	245 x 295 x 375	44	51	1	0.90	0.027	48
202625	25	26.9	245 x 295 x 435	44	51	1	1.10	0.031	48
202630	30	34.5	332 x 290 x 428	49	61	1	1.26	0.036	36



Wide mouth storage drums with tap and plug

Body and cap made of **polyethylene**. Screw cap with non hermetical plug. Using Teflon at thread tap is recommended to ensure a complete sealing. They embody a tap, and two black folding handles at the top. Not designed to transport liquids. External mouth diameter: 150 mm.

code	capacity l	Ø base mm	height mm	quantity	weight kg	volume
209030	30	355	457	1	1.51	0.059
209050	50	355	675	1	2.35	0.084



Large deep trays

Made of natural **high density polyethylene**. Stackable. Include ergonomically designed handles.



code	dimensions mm	height mm	tray volume l	quantity	weight kg	volume
19603	550 x 430	310	50	1	1.76	0.069
19604	630 x 440	340	65	1	3.00	0.090
19605	720 x 470	360	90	1	4.50	0.120



Funnels

Material: **polypropylene**. Autoclavable.



code	stem int. Ø mm	stem ext. Ø mm	bouche mm	quantity	weight	volume
194172	9.1	11.7	100	1	0.03	0.0005
194175	13.9	18.2	180	1	0.09	0.0013
194176	18.5	21.8	220	1	0.17	0.0028
194177	21.7	26.4	260	1	0.29	0.0081
194178	24.7	29.7	300	1	0.37	0.0110

Industrial drums

These drums are produced in **high density polyethylene**. Their particular top, which has a **perfectly stiffened rim obtained** during the moulding phase, prevents the opening from becoming deformed and the lid from becoming detached as a consequence of any drops or violent shocks.

They feature a metal washer that ensures a perfect closure where is also suitable to place a tamper evident seal.

Thanks to their **airtight seal**, they are **suitable for transport by sea, road or railway** and, thanks to their construction characteristics and qualities; they **fully meet the current ONU ADR standards for transport of hazardous products**.

Incinerable (excluding the metal closure).

These drums are produced using selected top-quality raw materials, they feature excellent drop-impact resistance even at low temperature (-20°C) and stability against corrosion from chemical agents which may cause stress cracking.

Their **internal surface is perfectly smooth**, and this makes it easy to fully empty and completely clean the inside from any powder, paste or semi-dense products. All references have two handles for easy carrying except code **208128**.

Made with materials suitable for alimentary use.

code	capacity l	external body Ø mm	external mouth Ø mm	internal mouth Ø mm	height mm	alimentary use	quantity	weight kg	volume	pallet quantity
CYLINDRICAL DRUMS										
208030	30	320	252	255	502	✓	1	2.50	0.08	48
208060	60	405	327	400	610	✓	1	3.02	0.15	27
208128	120	480	400	390	800	✓	1	5.48	0.30	18
RECTANGULAR DRUMS										
208031	30	285	275	235	52	✓	1	1.89	0.033	100
208061	60	360	445	423	62	✓	1	2.99	0.078	48

